

Post Shipment Analysis

Envirotainer has a unique position earned from our long history of working with many partners in the field of Air Cargo Temperature Management™. Our experience has led to the development of two services, delivered through our Cold Chain Management department, that are designed to provide cold chain visibility that can be used to improve the cold chain.

CCM Service - Transport Evaluation

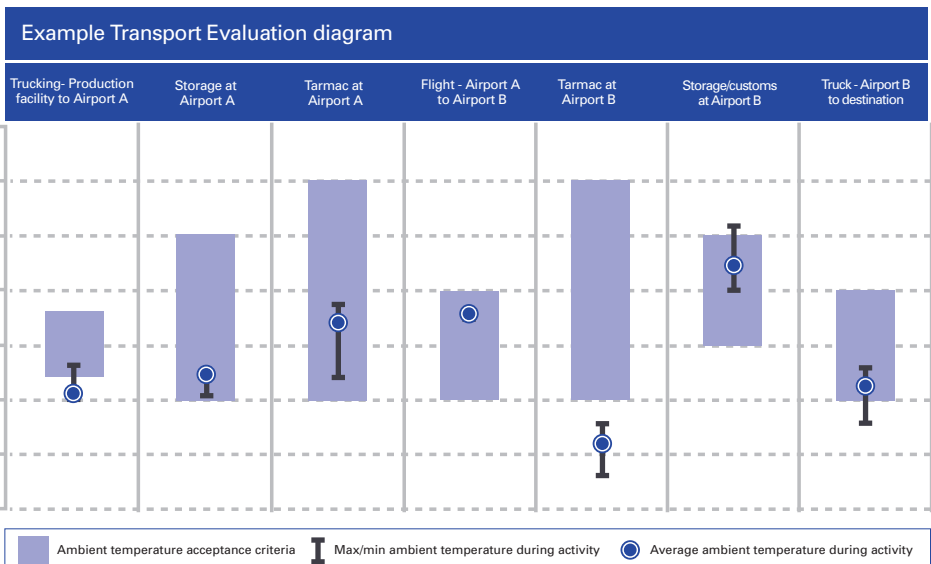
Transport Evaluation is the fundamental tool to follow-up shipments in the cold chain, ensuring repeatable handling procedures with predictable long term, high quality results.

The purpose of the service is to enable targeted improvements in your supply chain by showing the ambient temperature a container is exposed to during a shipment per transport activity and highlighting where deviations are occurring. The recorded data is compared to a predefined Transportation Schedule with acceptance criteria for time and temperature exposure.

Benefits:

- Quick and informative overview of shipment data in easy to read graphs and diagrams
- Improvement areas can be identified in a measurable way
- Amendments to the cold chain can be evaluated based on statistics to reduce shipping risks
- Improved communication to cold chain partners
- Feedback to supplier regarding actual exposure to ambient conditions

The data collected in the consistent use of the Transport Evaluation Service can be used for comprehensive quarterly reviews, cold chain amendment and adjustment of SOP's to better reflect reality.

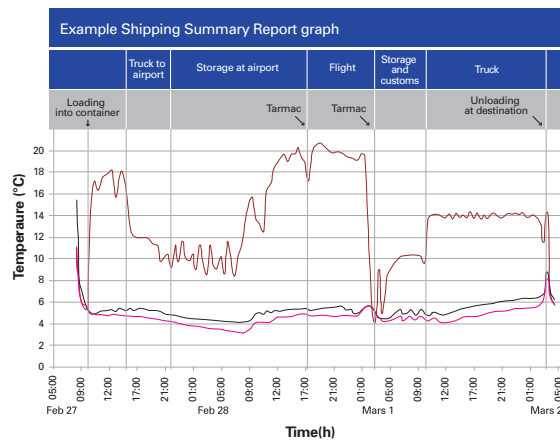


CCM Service – Shipping Summary Reports

The purpose of the service is to provide visibility of temperature in different activities throughout the cold chain. Using data captured by temperature monitors during the shipment, the Envirotainer Cold Chain Management department prepares Shipping Summary Reports.

Each Shipping Summary Report contains analysis of a performed shipment and also includes recommendations on how to improve the cold chain. Both product and ambient temperatures are evaluated.

- A graph is provided with the recorded product and ambient temperature readings throughout the entire cold chain.
- Key activities such as trucking, flight and storage are visualized in the graph based on Air Way Bill number and check lists.
- The report highlights any ambient temperatures above or below the container specification.
- In case of any product temperature excursion, a root cause analysis is performed to establish possible and probable causes of the excursion. Corrective actions are also suggested.



To find out more about Transport Evaluation or Shipping Summary Reports, contact the Envirotainer Cold Chain Management department.

Contact worldwide The Envirotainer Cold Chain Management services are available worldwide.

Envirotainer Cold Chain Management

Phone: + 46 (0)18 34 73 00

Email: ccm-support@envirotainer.com

www.envirotainer.com

Envirotainer is a registered trademark of the company Envirotainer AB. All rights reserved.