



Product picture shows an exemplary solution for the temperature range +2 °C to +8 °C.

LOADING PROOFBLOKS INTO PROOFPak 240

Ensure patient-safe medicines and accurate clinical trial results with ProofPak. Our innovative, reusable thermal packaging ensures precise temperature control from -70°C to +37°C, unaffected by seasons or climate. Qualified according to ISTA 7D standards, ProofPak ensures consistent reliability, safeguarding your temperature-sensitive pharmaceuticals from production through to delivery. Experience seamless logistics with 'ready to load & go', giving you time to focus on advancing your clinical research while we protect your products with unmatched precision and reliability. The ProofPak 240 is a palletized solution which comes with several features. Belt straps provide easy handling for the lid. An outer cardboard ring and cardboard lid gives additional stability and protection. An inner cardboard provides additional stability inside. The pallet is certified according to ISPM 15. All features are essential to the ProofPak 240 and should not be removed.

Note: This product shall be stored and transported in upright position!

This instruction document describes each step of the loading process for ProofPak 240 with the corresponding ProofBloks. The following loading instruction is only valid for: **ProofPak 240**.

Note

This SOP is valid for **ProofPak 240 in Standard and Premium Configuration**.

Prior to loading, the ProofBloks must be preconditioned as per the respective SOP instructions for the desired temperature range. The desired temperature range depends on the PCM (phase change material) utilized and is indicated by the color code of the ProofBlok. Table 1 summarizes the different PCMs of the ProofBloks, their corresponding color codes and application temperatures.

A ProofPak 240 uses a total of 24 ProofBloks. The required size of the ProofBloks used depends on whether the ProofPak 240 is used in premium or standard configuration. Table 2 at the end of the document provides the relevant ProofBlok sizes for each configuration.

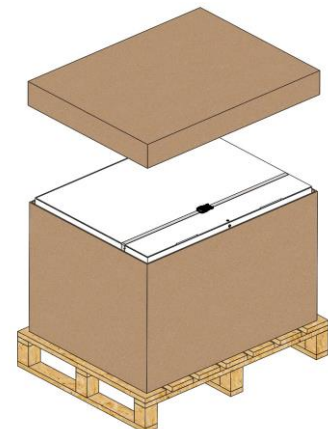
Throughout this SOP, the ProofBloks required for each loading step will be referred to as ProofBlok A (Bottom and Top position), ProofBlok B (Back and Front position), and ProofBlok C (Left and Right position). Please use the ProofBlok A, ProofBlok B, and ProofBlok C specified in Table 2 for the corresponding ProofPak 240 configuration when following the loading SOP.

Step 1

- Open the lid of the outer carton of the ProofPak 240.

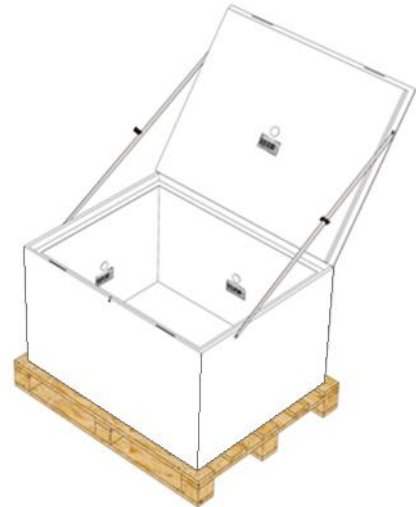
Note:

The outer cardboard ring and lid are hidden in the following figures. However, the outer ring and lid are part of the product and should not be removed as they provide additional stability and protection for the overall product.



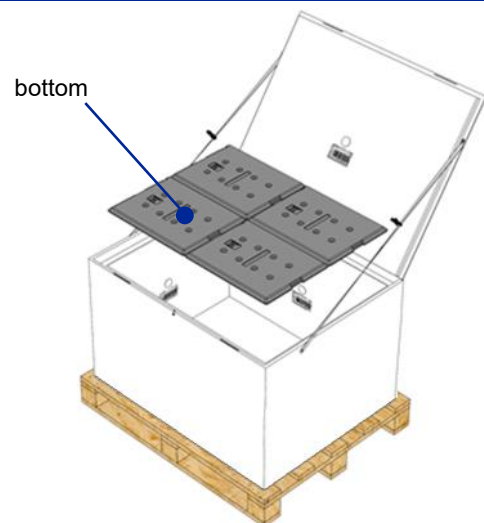
Step 2

- Open the lid of the ProofPak 240.



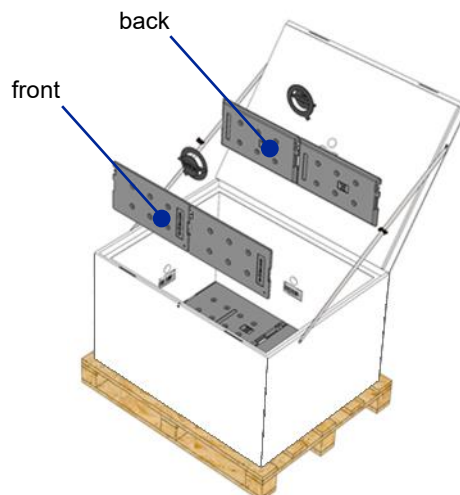
Step 3

- Place 4 pieces of **ProofBlok A** on the bottom of the ProofPak 240.



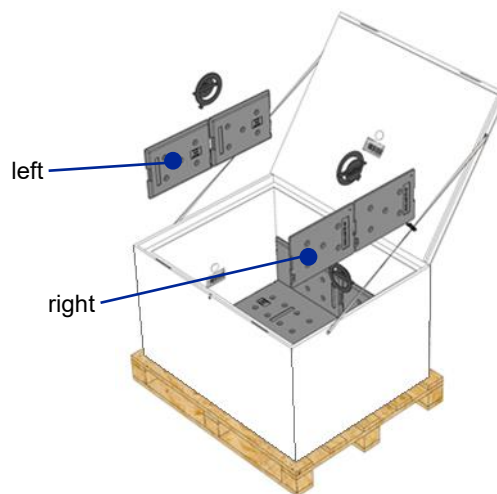
Step 4

- Load 2 pieces of **ProofBlok B** each at the long sides.
- After that fixate them with one temperature battery holder each. Ensure that the ring faces the inside.



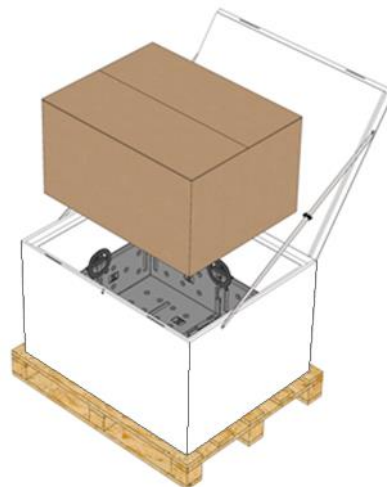
Step 5

- Load 2 pieces of **ProofBlok C** each at the short sides.
- After that fixate them with one temperature battery holder each. Ensure that the ring faces the inside.



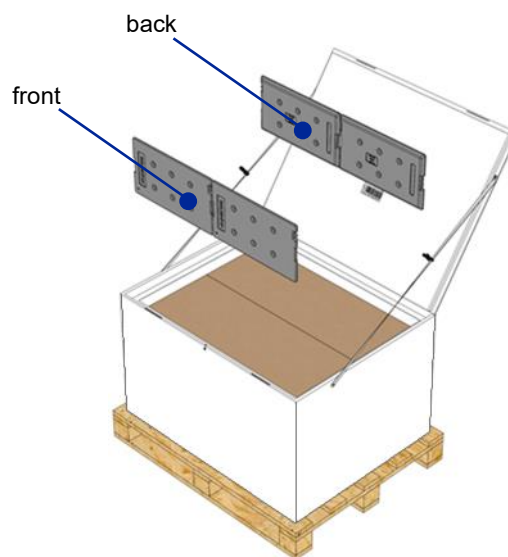
Step 6

- Put the inner cardboard into the ProofPak 240.



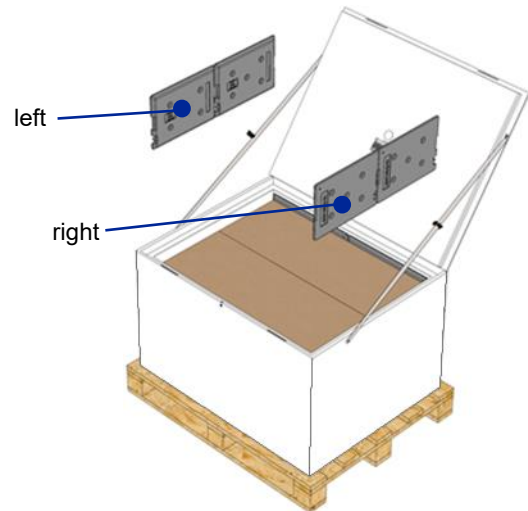
Step 7

- Load another 2 pieces of **ProoBloks B** each at the long sides.



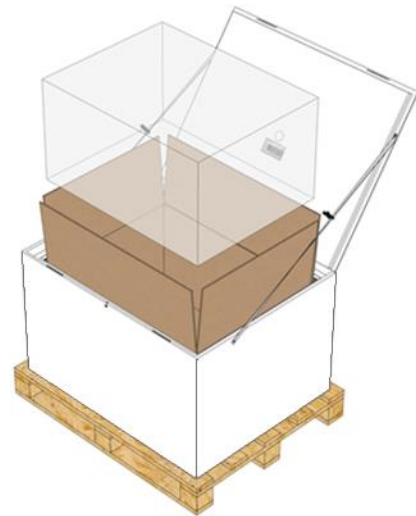
Step 8

- Load another 2 pieces of **ProoBlok C** each at the short sides.



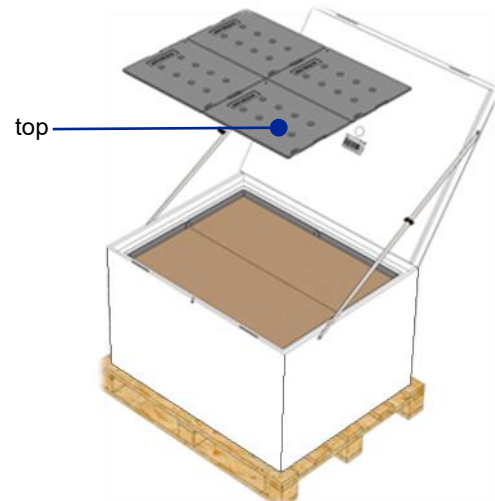
Step 9

- Load the products into the inner cardboard.



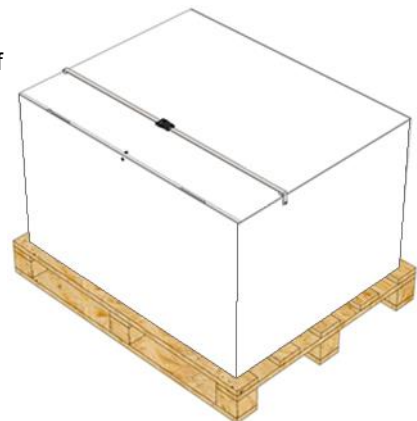
Step 10

- Close the inner cardboard.
- Place 4 pieces of **ProoBlok A** on top.



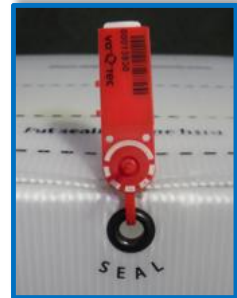
Step 11

- Close the lid of the ProofPak 240. Make sure the belt strap is outside of the ProofPak 240. Confirm it is not stuck between lid and the rest of the container.
- Lock the belt strap above the lid of the ProofPak 240.



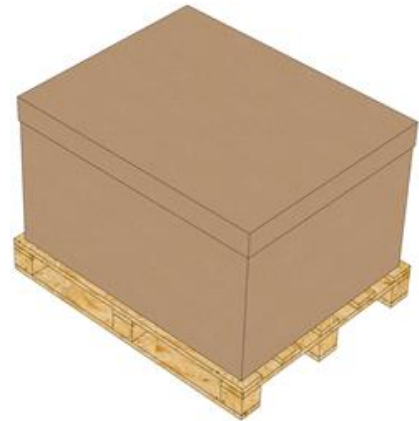
Step 12

- Thread a seal through the loops to secure the ProofPak 240.



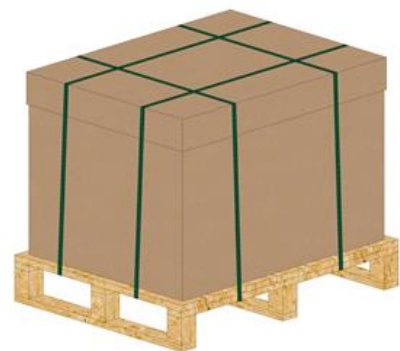
Step 13

- Close the lid of the outer cardboard.



Step 14

- Strap the ProofPak 240 as shown in the picture. To ensure transport security it is recommended to strap it four times.



Note

Do not burden the belt strap – otherwise it could be damaged.

It is not installed to lift it up, but to provide additional stability by opening the lid and simplifying the handling.



TAB. 1: COLOR CODE FOR DIFFERENT PCM CONFIGURATIONS

| PCM | Application | Color Code | |
|------|---------------------|------------|-----|
| | | PCM | Cap |
| +37G | For +37°C shipments | | |
| +22G | For +20°C shipments | | |
| +05G | For +5°C shipments | | |
| -21G | For -20°C shipments | | |
| -67G | For -70°C shipments | | |

TAB. 2: CORRESPONDING PROOFBLOK SIZES FOR PROOFPK 240 CONFIGURATION

| ProofPak size | Configuration | ProofBlok A | ProofBlok B | ProofBlok C |
|---------------|---------------|--------------|--------------|--------------|
| | | Top / Bottom | Back / Front | Left / Right |
| 240 | standard | 46362 | 46262 | 36262 |
| | premium | 46363 | 46263 | 36263 |

For more information, please contact support@envirotainer.com