



Illustration of OnePal US.

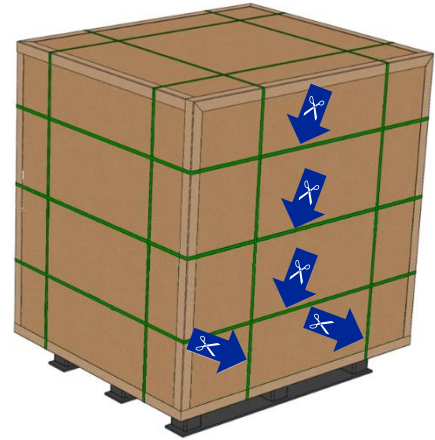
LOADING PROOFBLOKS INTO ONEPAL US

Available to support commercial shipments of pharmaceuticals to remote areas, OnePal US is a 1 pallet sized solution, placed on a durable wooden pallet which is easily fork liftable from all four sides. The following document describes the loading process for the OnePal US.

Step 1

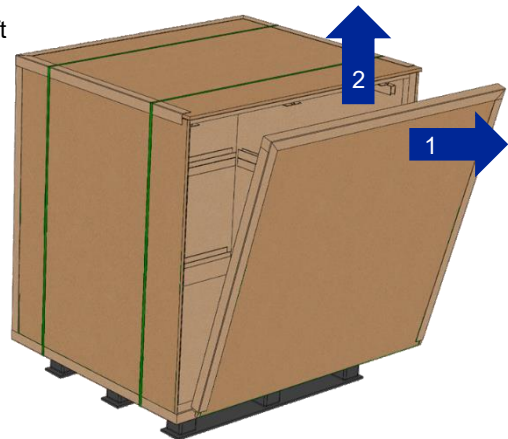
- Remove the stretch foil and the marked straps to open the OnePal US. The door is marked with the words "Open this side".

Note: Before loading, the ProofBloks have to be preconditioned as per the respective SOP preconditioning instructions.



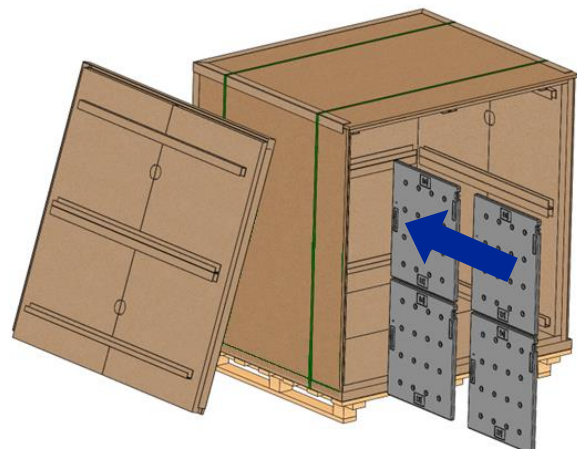
Step 2

- Open the door: Tilt the door at the upper side outwards, then lift it up and put it aside.



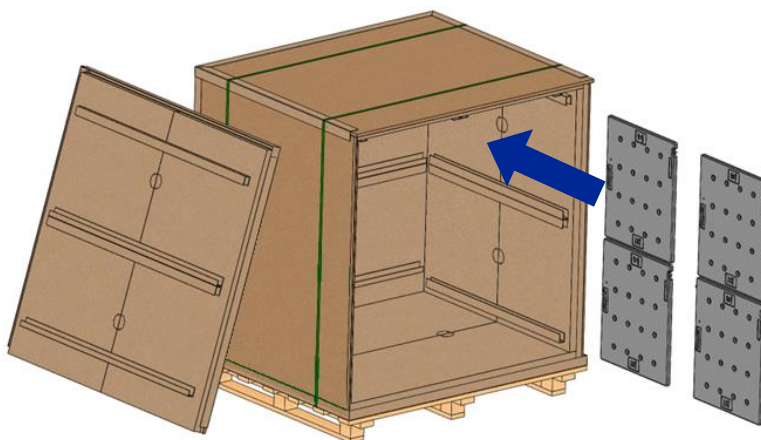
Step 3

- Slide 4 pcs. of ProofBlok 60502 into the runners of the left side wall.



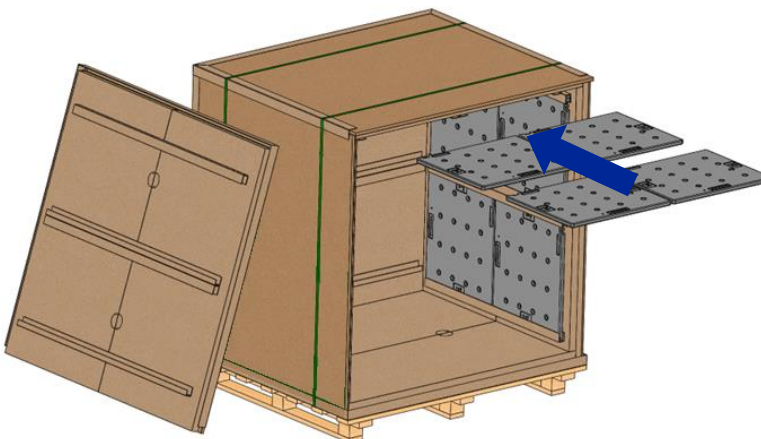
Step 4

- Slide 4 pcs. of ProofBlok 60502 into the runners of the right side wall.



Step 5

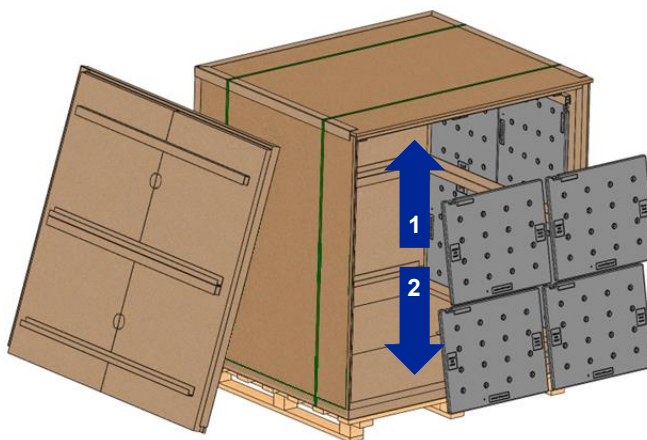
- Slide 4 pcs. of ProofBlok 60502 into the runners of the top plate.



Step 6

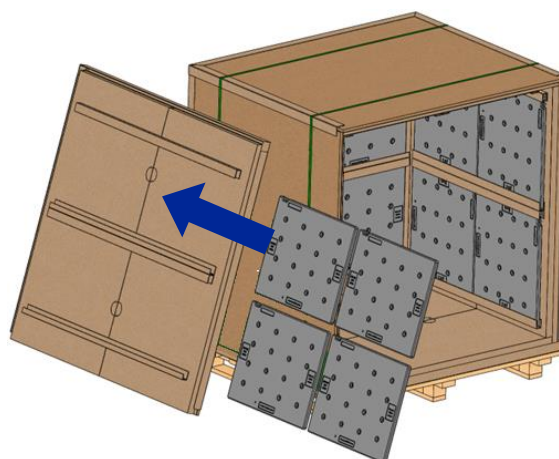
- Load 4 pcs. of ProofBlok 60502 into the holders of the back wall.

Note: First insert the accus into the top runners, then into the lower runners.

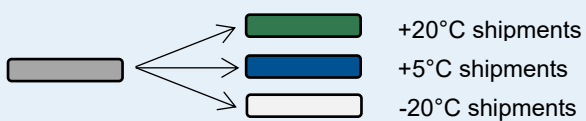


Step 7

- Slide 4 pcs. of ProofBlok 60502 into the runners of the door.

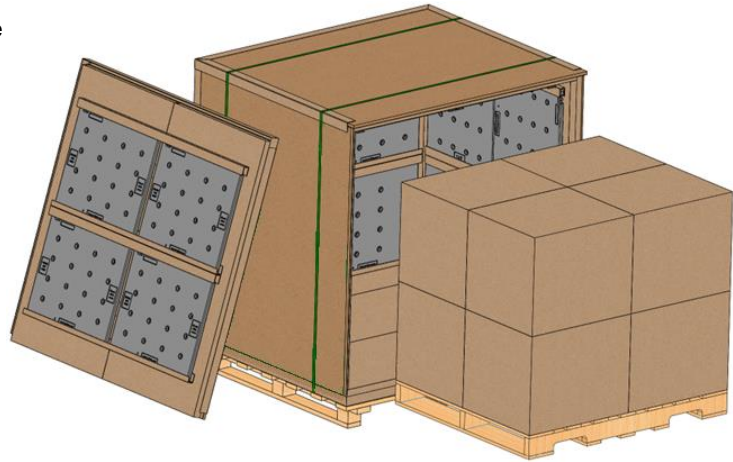


ProofBlok



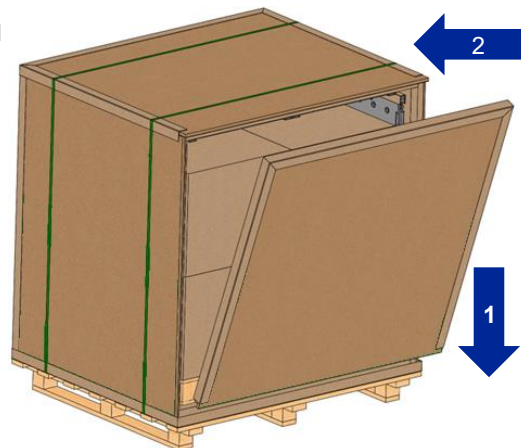
Step 8

- Load the product into the OnePal US. The use of a pallet when loading is necessary to guarantee the air circulation.
- The use of load securing measures is in customer's responsibility.



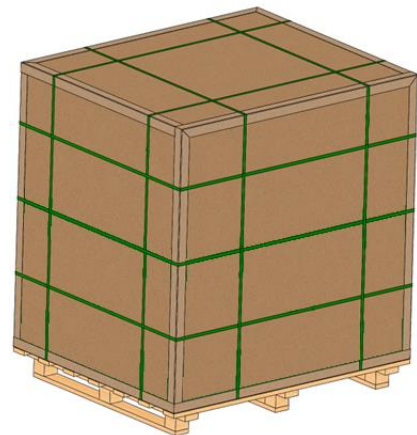
Step 9

- Close the door of the OnePal US. Therefore, take wall ⑤ and insert it into the edge protector of the base plate in a slightly tilted position. Close it and ensure all side walls fit into the edge protectors of the door.



Step 10

- Strap the OnePal US twice vertically along front wall and three times horizontally as shown per respective marking on front wall (Tension force: approx. 800 N / 190 lbf). Wrap the OnePal US with stretch foil to protect it against moisture.



Handling recommendations

- Avoid dropping or applying excessive force on OnePal US.
- Use proper material handling equipment/industrial trucks only.
- Transport the OnePal US only when it's strapped.
- Check the OnePal US for external damages before shipping.
- Do not double stack.
- Store in a dry place.

Storage recommendations

The proper storage is crucial when moving or storing OnePal US. Improperly stored OnePal US can result in cardboard that swells or becomes distorted when there is too much moisture. The OnePal US should not be stored outside under any circumstances due to fluctuations in weather. Knowing how to store the OnePal US properly will prolong and keep their appearance.

- Use a climate-controlled facility helps regulate humidity.
- OnePal US should be stored in a dry environment.
- Packaging integrity: during storage of OnePal US, keep it in the original packaging.

For more information, please contact support@envirotainer.com