

EWS99999;RKN69999PC

## REVIEW OF INSIGHT REPORT

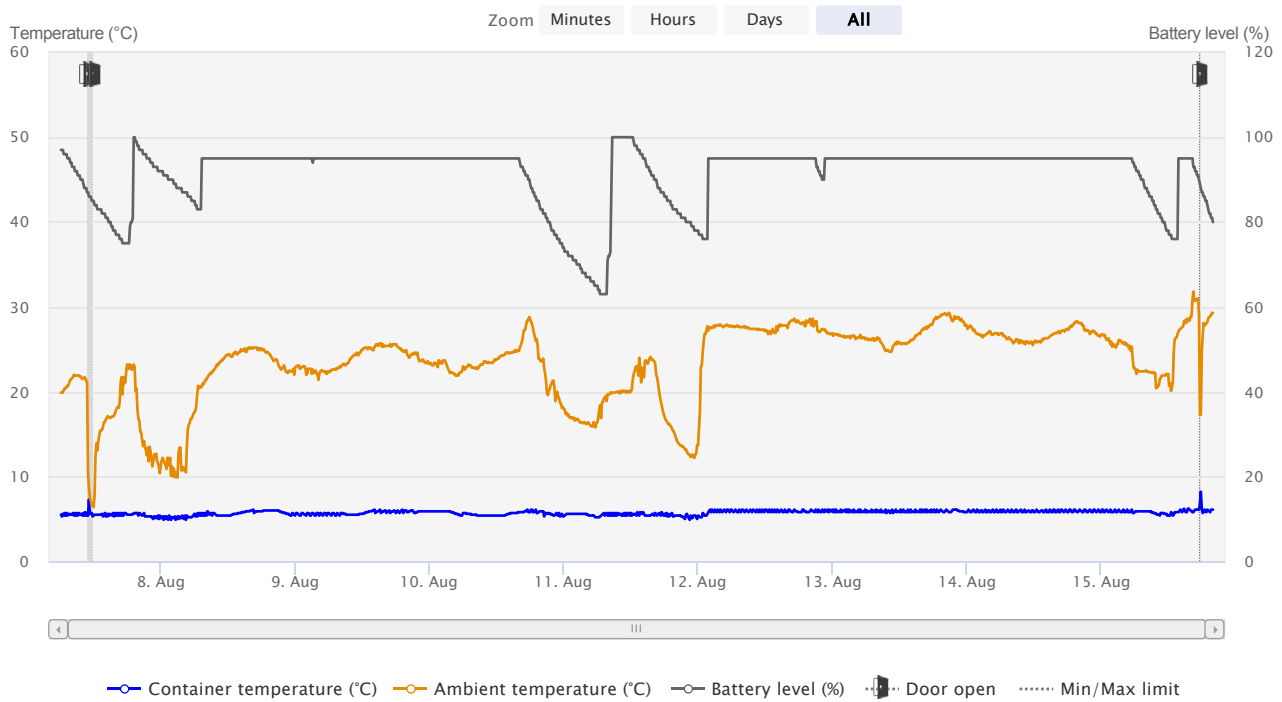
**Container temperature**

<b>Container</b>	RKN69999PC
<b>Trade Lane</b>	STR-ORD
<b>AWB</b>	123-44556677
<b>Order</b>	EWS99999
<b>Release Date</b>	7 Aug 2019 06:02 UTC
<b>Return Date</b>	20 Aug 2019 14:49 UTC
<b>Lessee</b>	Guest Lessee
<b>Shipper</b>	Guest Shipper
<b>Forwarder</b>	Guest Forwarder
<b>Airline</b>	Guest Airline
<b>Logging Time</b>	205 hours, 50 minutes
<b>First Logging</b>	7 Aug 2019 06:10 UTC
<b>Latest Logging</b>	15 Aug 2019 20:00 UTC

## SENSOR CHART

CONTAINER TEMPERATURE    HIGH **+8.2°C**    LOW **+4.9°C**

Number of data points: 1236



## SENSOR OVERVIEW

Sensor	Extreme	Measured	Status	Limit	Occurrences	Outside limit total duration
Container temperature	High	+8.2°C	-	-	-	-
Container temperature	Low	+4.9°C	-	-	-	-
Ambient temperature	High	+31.8°C	-	-	-	-
Ambient temperature	Low	+6.4°C	-	-	-	-
Battery level	Low	63%	✓	30%	0	0 hours, 0 minutes

Sensor	Extreme	Measured	Status	Limit	Occurrences	Outside limit total duration
Door open	High	-	!	-	5	0 hours, 30 minutes

## DETAILS

Door open	-	Door open	-
Start: 7 Aug 2019 11:10 UTC		Start: 15 Aug 2019 17:40 UTC	
Stop: 7 Aug 2019 11:40 UTC		Stop: 15 Aug 2019 17:40 UTC	
Duration: 0 hours, 30 minutes		Duration: -	
Occurrences: 4		Occurrences: 1	

## DATA & DISCLAIMER

### DATA

Inside temperature is the average temperature inside the container.

Temperature loggers should always be placed on the goods, in order to capture temperature gradients across the load.

### TERMS OF USE / DISCLAIMER

This Cold Chain report is rendered by Envirotainer, exclusively to [Lessee], and prepared for the sole purpose of providing container data to [Lessee].

The Cold Chain report does not, nor intend to, explain all issues and circumstances that may be relevant for, or which can affect the use of Envirotainer's products.

This Cold Chain report contain unedited and unverified data. Although Envirotainer uses its experience and knowledge to provide as reliable and suitable Cold Chain reports as reasonably possible, Envirotainer cannot guarantee its accuracy, correctness or completeness.

Any liability for the performance or construction of Envirotainer's products is exclusively regulated by the agreement under which such product has been provided. This Cold Chain report does not include any representation or warranty, expressed or implied to [Lessee] nor any third party whatsoever. In no event will Envirotainer be liable for any direct, indirect, special, incidental, or consequential damages or any other loss of goodwill or loss of prospective economic advantage resulting from reliance on the information contained in this Cold Chain report by [Lessee] or any third party.

[Lessee] acknowledge that the Cold Chain report and the data it contains remain the property of Envirotainer and that [Lessee] do not acquire any right whatsoever to the Cold Chain Report or such data.

[Lessee] will maintain the Cold Chain report in confidence and will not disclose it to third parties except as explicitly permitted by Envirotainer. Disclosure to parties actively engaged in the shipment that the Cold Chain report concern is permitted unless such disclosure would violate other obligations of confidentiality.